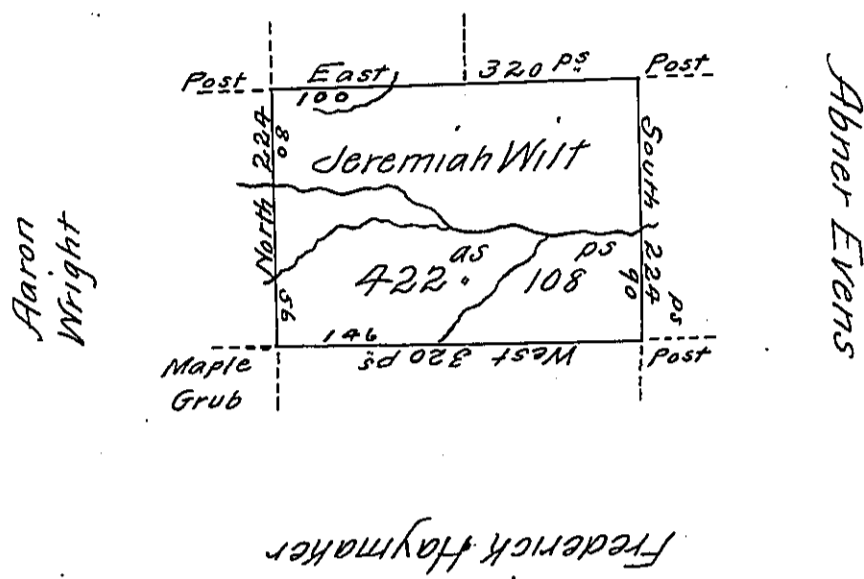


Shelden Tim?  
Sherwood Alden



In pursuance of a warrant for 400 Acres dated the 21<sup>st</sup> day of April 1794 granted to Jeremiah Wilt was surveyed on the 25<sup>th</sup> day of November 1823 the above described Tract of Land, containing 422 Acres 108 Perches and allowance of Six per cent for Roads &c - Situate in Sadsbury township in Crawford County and at the time of surveying the same Franklin Stratten was in possession thereof - It being the same tract which was surveyed the 4<sup>th</sup> day of June 1795 for Joseph Marshal in pursuance of his improvement bearing date the first day of June 1795

To Samuel Cochran Esq<sup>r</sup>  
Surveyor General

Eben<sup>r</sup>. Felton D.S.

Note - The above is reasonably descriptive of the original location

Eben<sup>r</sup>. Felton D.S.

IN TESTIMONY that the above is a copy of the original remaining on file in the Department of Internal Affairs of Pennsylvania, made conformably to an Act of Assembly approved the 16th day of February, 1833, I have hereunto set my Hand and caused the Seal of said Department to be affixed at Harrisburg, this Sixteenth day of December 1910

*Henry Houch*  
Secretary of Internal Affairs.